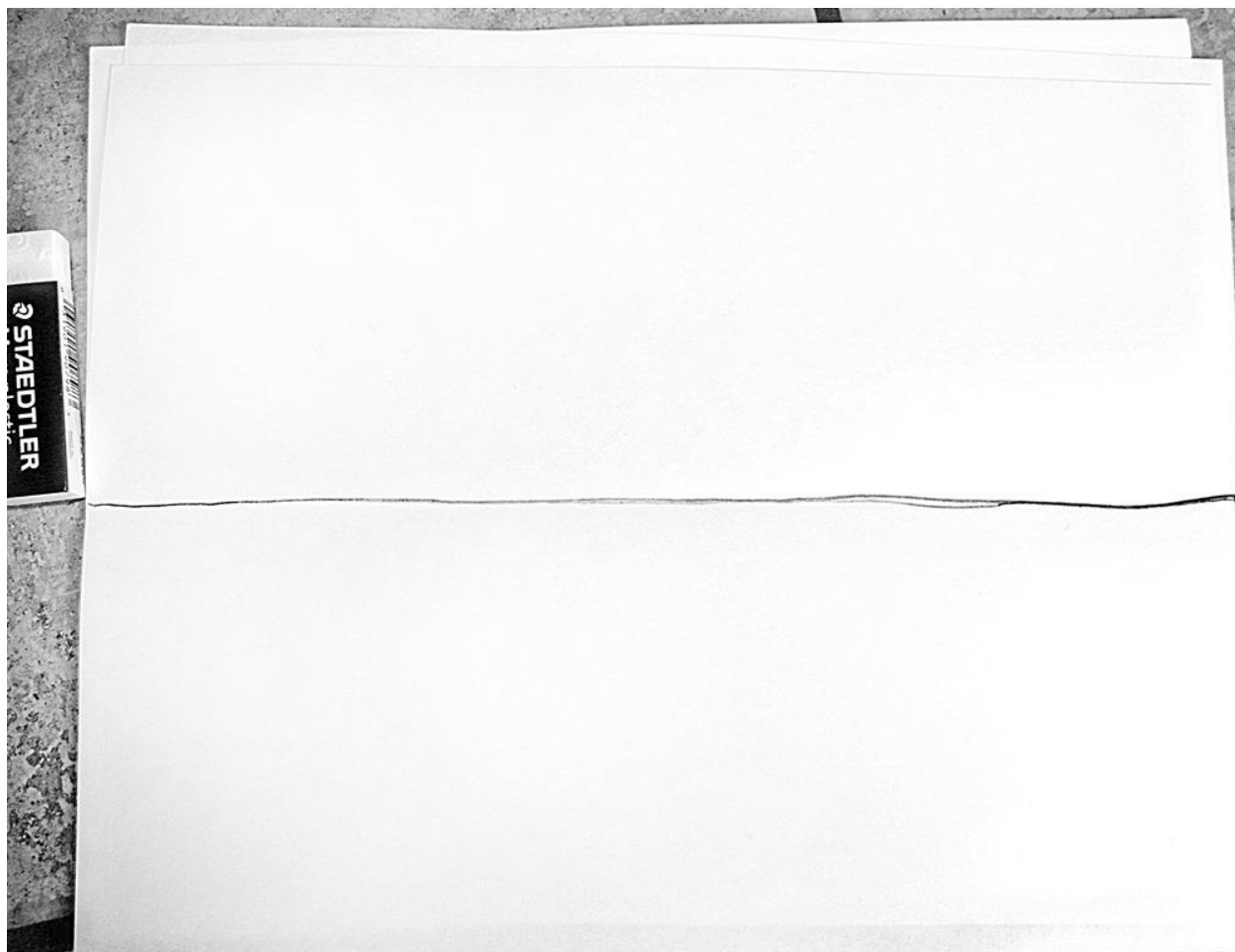
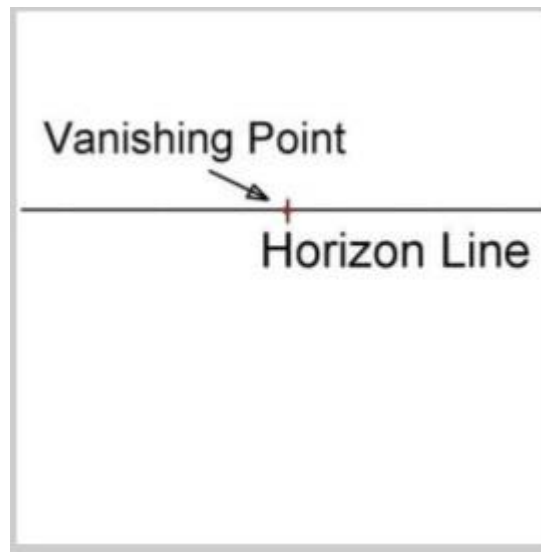


One point perspective landscape drawing

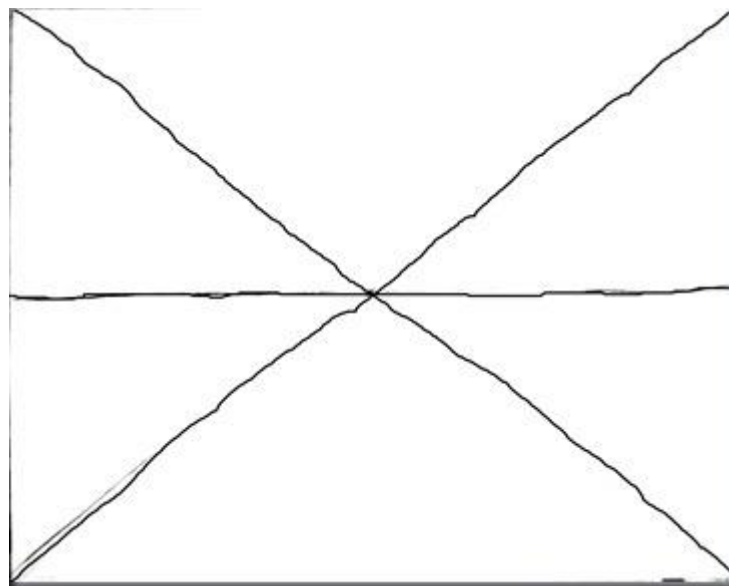
1. Begin with the horizon line in the middle of the page.



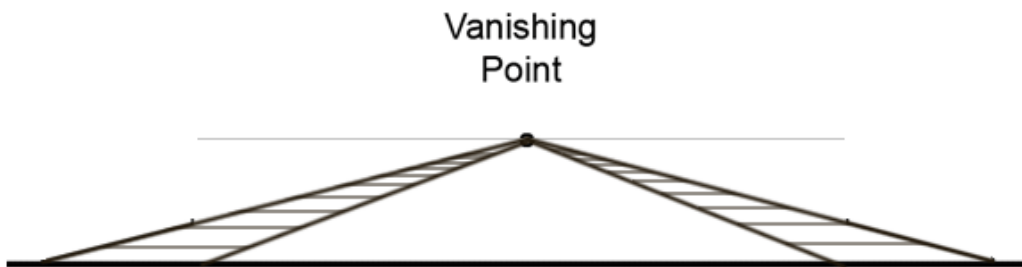
2. Mark a dot on that line. This dot is the vanishing point.



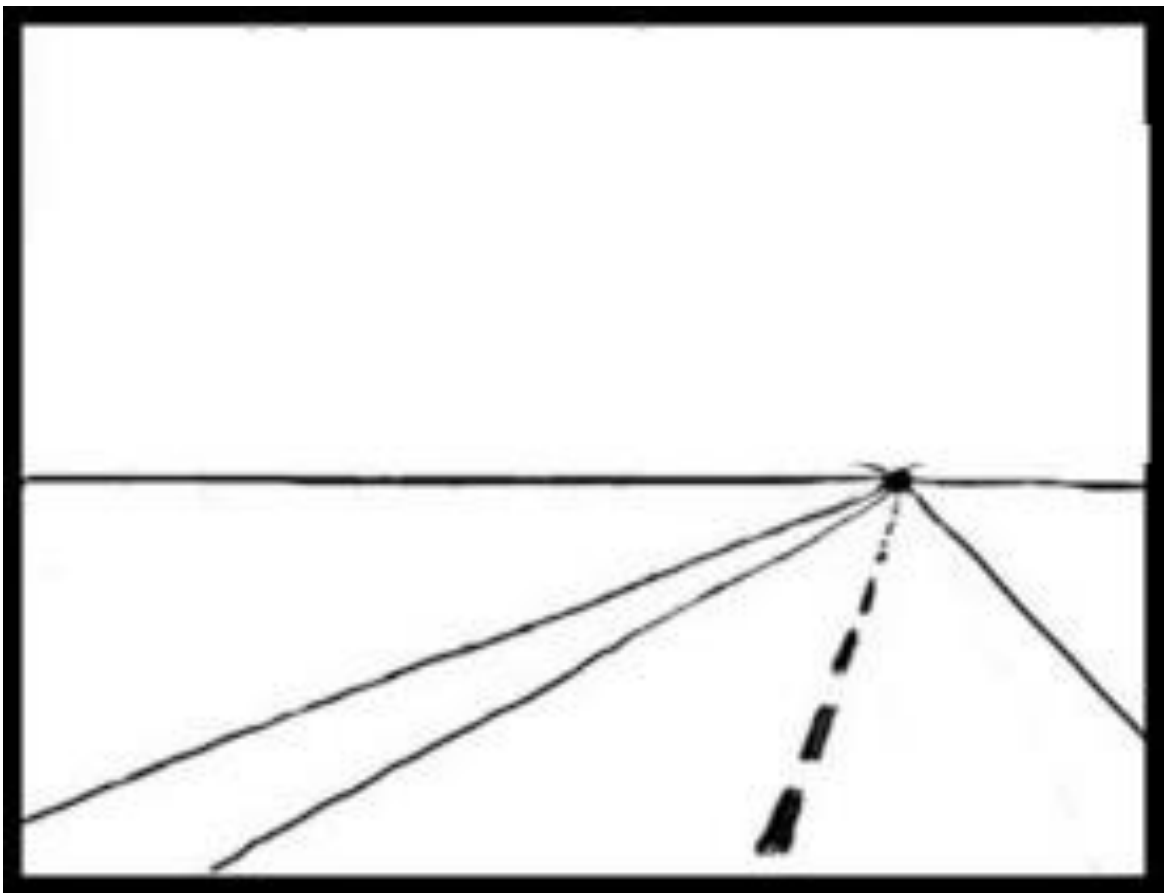
3. Make a "X" from corner to corner (or close enough) passing through that dot.



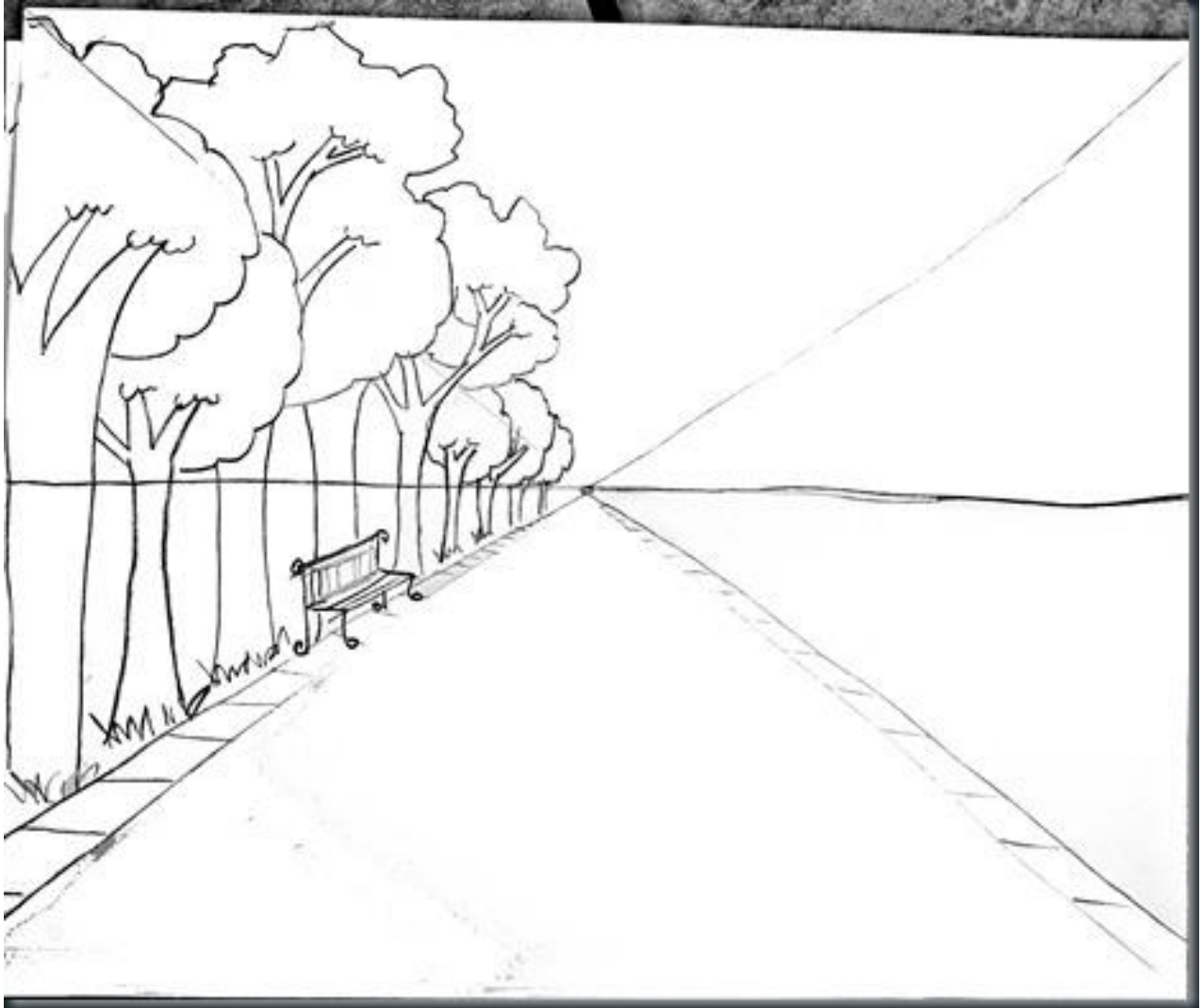
4. Draw the sidewalks starting from the vanishing point.



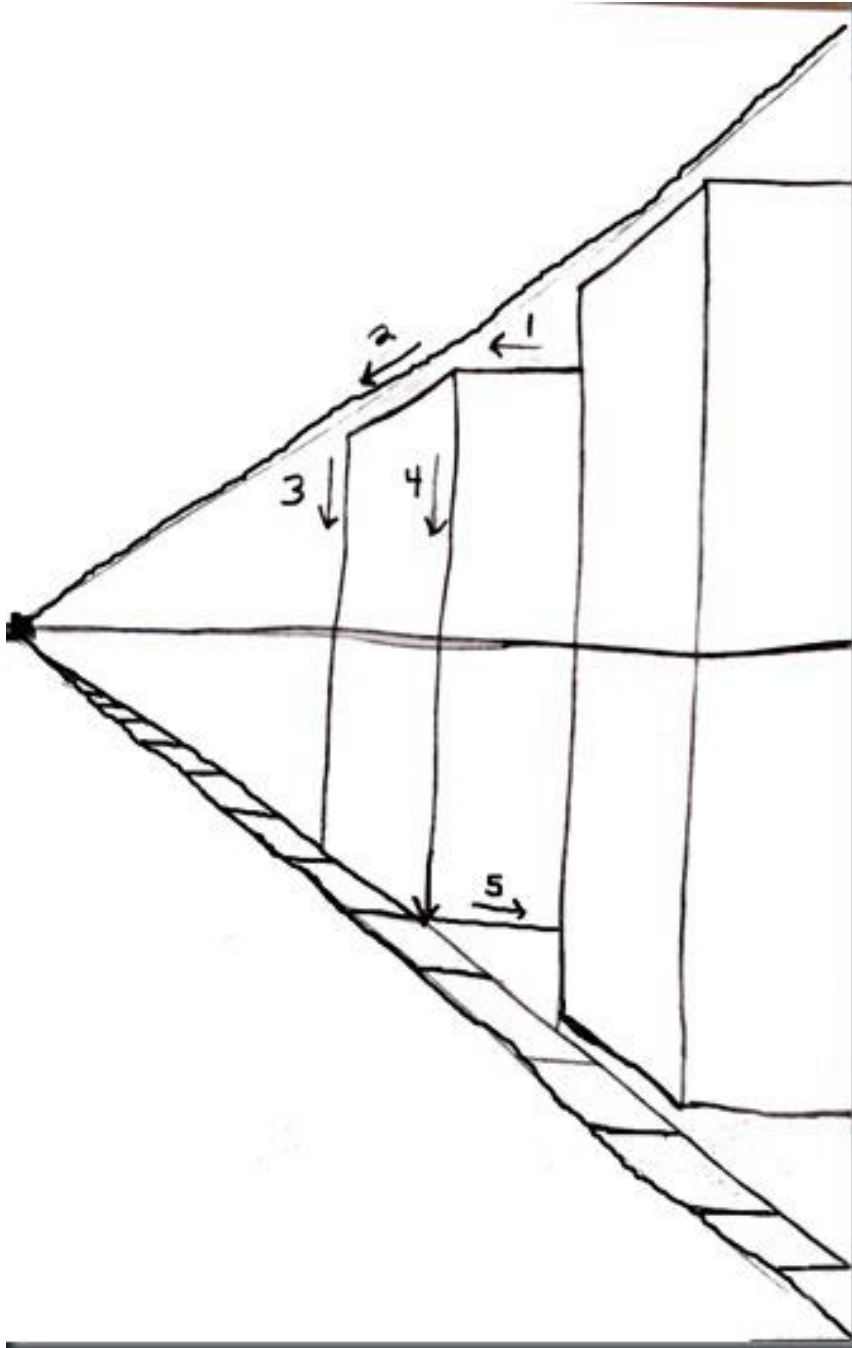
5. Draw a divider in the middle of the road.



6. Draw the trees on left sidewalk. Start from closest to the farthest. Make sure trees are straight and parallel to the side of the paper.

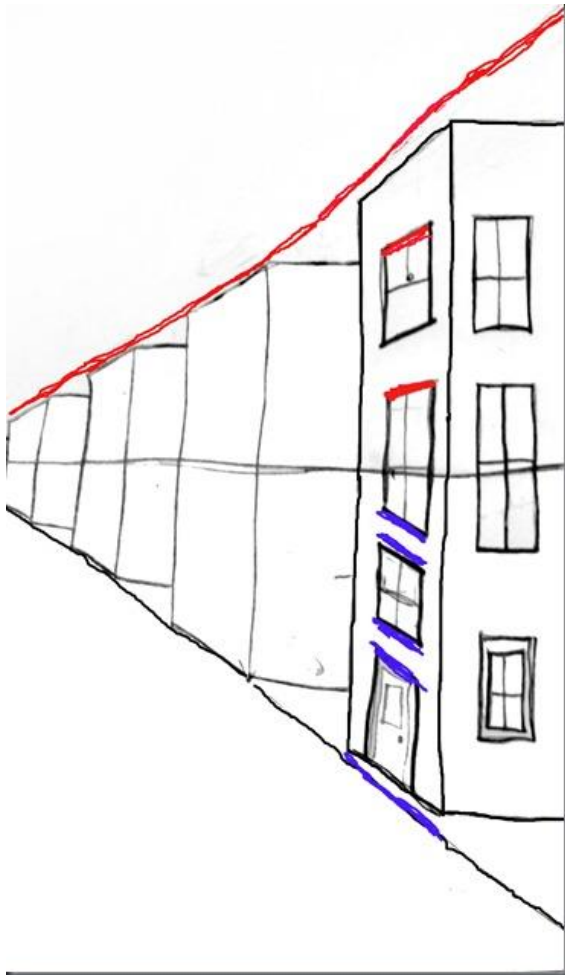


7. Draw the buildings- “One, straight out, two diagonal down, three, straight down to the ground, four straight down again, and five, bring it in along the side!”



8. Draw the doors and windows. This is little tricky. Start with the side with the door facing the street.

The lines on the tops and bottoms of the windows ABOVE the horizon line are parallel to the top part of the "X"below that, when you PASS the Horizon line, the lines on the tops and bottoms of the windows are parallel to the BOTTOM part of the "X" which is now the sidewalk. The top of the door is also parallel to the sidewalk.

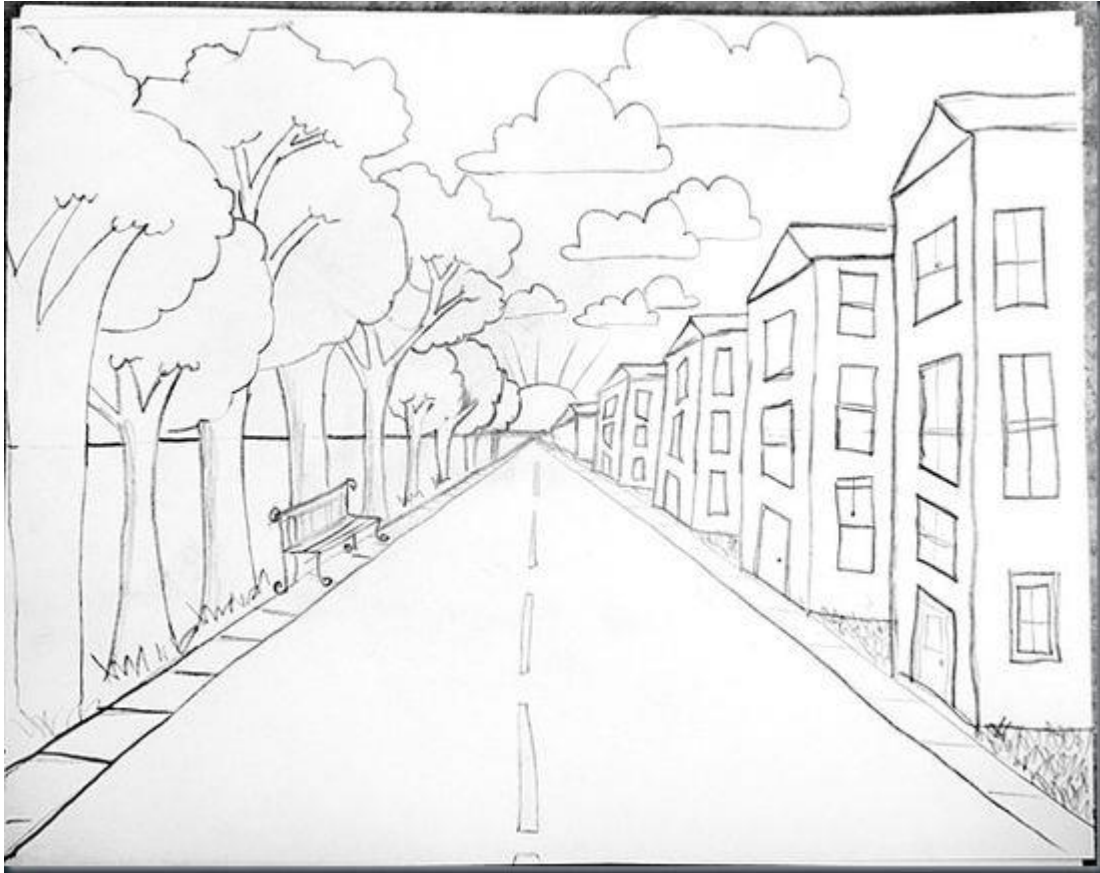


The windows on the OTHER side of the house are normal right angle squares or rectangles.

9. Now erase the "X" and the parts of the horizon line that overlap the trees and buildings



10. Add details and colour



Thanks to:

<http://elementaryartfun.blogspot.ca/2012/02/drawing-steps-for-one-point-perspective.html>